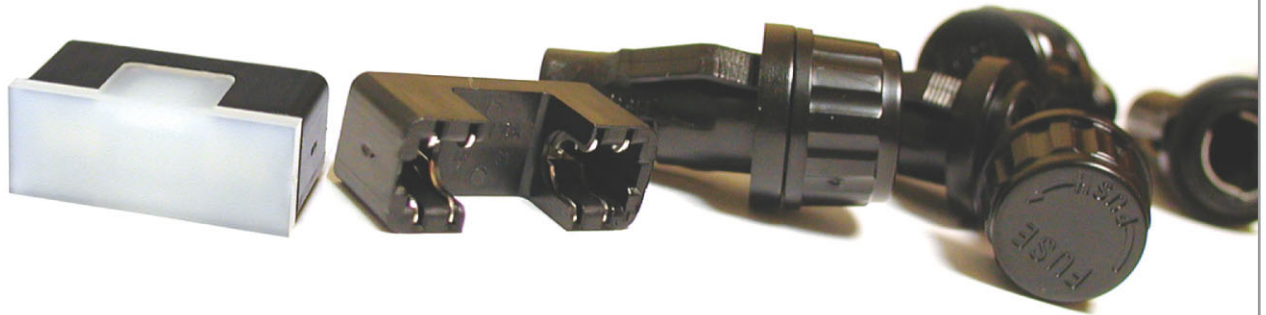


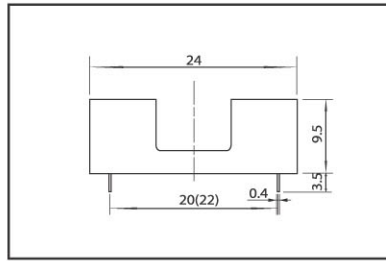
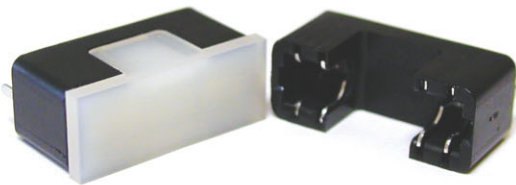
FUSE BLOCKS & HOLDERS



TYPE GF 205B

DIMENSION

DETAILS

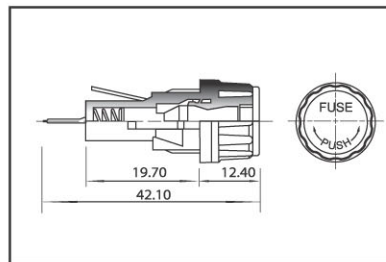


- ▶ Standard for $\Phi 5.2 \times 20.0\text{mm}$ (0.196" \times 0.787") Fuse
- ▶ Contact resistance : $5\text{m}\Omega$ max
- ▶ Clip and terminal welded
- ▶ Quick-connect terminal
- ▶ Various terminal angle available
- ▶ Phosphor Bronze high tensile clips

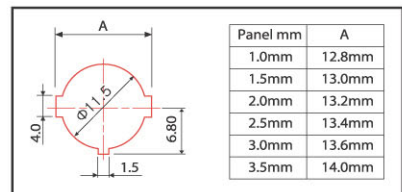
TYPE FH 02A

DIMENSION

DETAILS



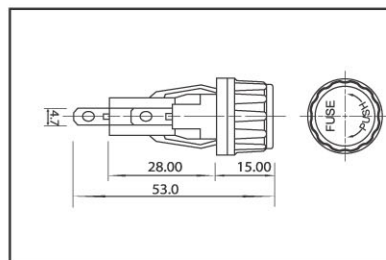
- ▶ Standard for $\Phi 5.2 \times 20.0\text{mm}$ (0.196" \times 0.787") Fuse with locking type knob
- ▶ Ratings : 250V 10A
- ▶ Puncture test : 1500V AC



TYPE FH 01A

DIMENSION

DETAILS



- ▶ Standard for $6.35 \times 31.8\text{mm}$ ($\frac{1}{4}$ " \times $1\frac{1}{4}$ ") Fuse with locking type knob
- ▶ Ratings : 250V 10A
- ▶ Puncture test : 1500V AC

