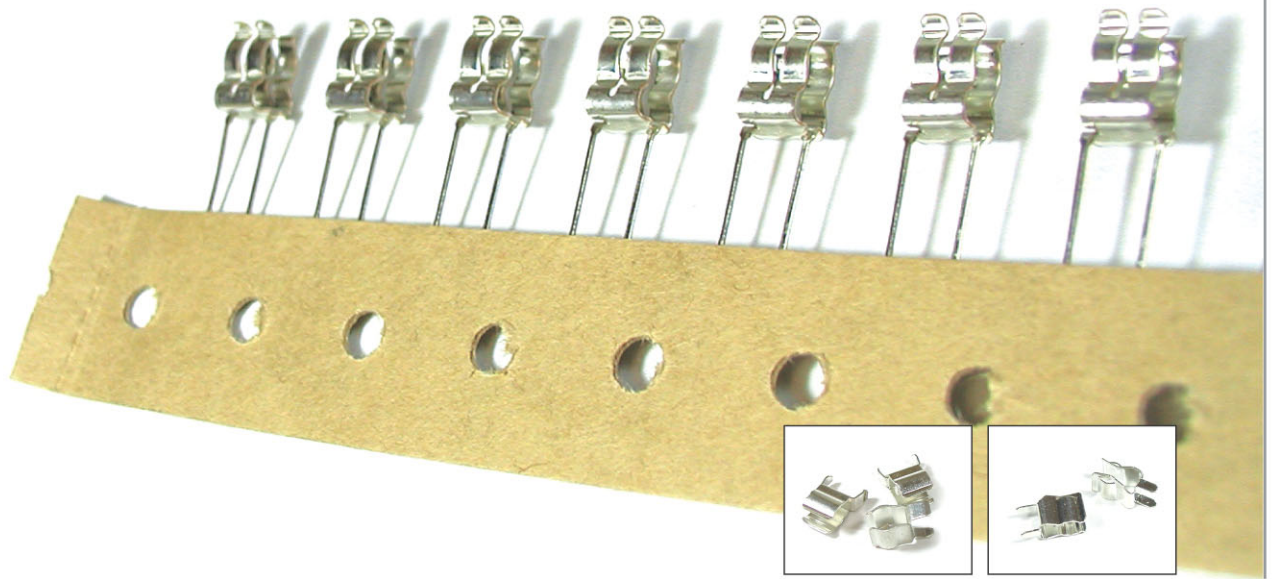


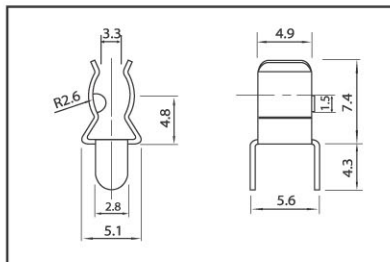
# FUSE CLIPS



## TYPE 51A



### DIMENSION



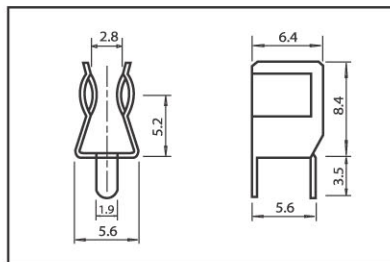
### DETAILS

- ▶ Material : Phosphor Bronze Spring
- ▶ Tin or Nickel plated
- ▶ Max. Voltage drop with dummy copper bar insertion : 4mV/Amp.
- ▶ For fuses 5mm diameter
- ▶ Thickness : 0.35

## TYPE 51E



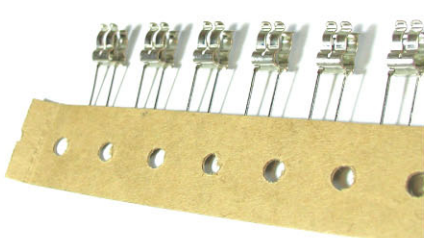
### DIMENSION



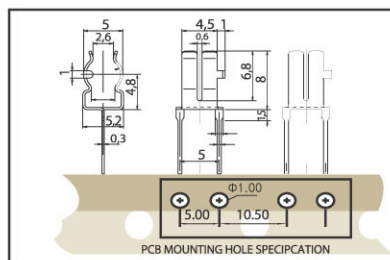
### DETAILS

- ▶ Material : Phosphor Bronze Spring
- ▶ Tin or Nickel plated
- ▶ Max. Voltage drop with dummy copper bar insertion : 4mV/Amp.
- ▶ For fuses 5mm diameter
- ▶ Thickness : 0.35

## TYPE 51F



### DIMENSION



### DETAILS

- ▶ Material : Phosphor Bronze Spring
- ▶ Tin or Nickel plated
- ▶ Max. Voltage drop with dummy copper bar insertion : 4mV/Amp.
- ▶ For fuses 5mm diameter
- ▶ Thickness : 0.30